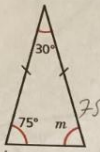


Angles in a triangle - special cases

White Rose Maths

1 Here is a triangle.



a) What type of triangle is it?

Isosceles ✓

How do you know?

it has two equal angles and sides. ✓

b) Work out the size of angle m .

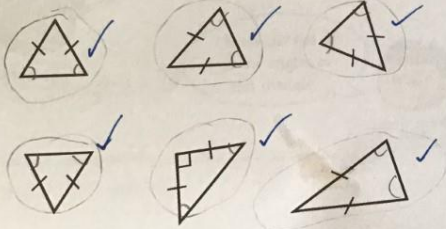
75 ✓

c) What do you notice? its the same as the opposite angle ✓

d) Complete the sentence to describe the angles in an isosceles triangle.

In an isosceles triangle two of the angles are the same. ✓

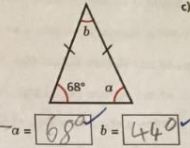
2 Identify and label the angles that will be equal in each triangle.



$$\begin{array}{r} 180 \\ - 136 \\ \hline 44 \end{array}$$

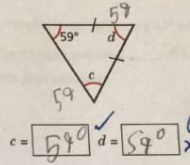
3 Work out the sizes of the unknown angles.

a)



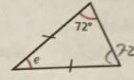
$a = 68^\circ$ $b = 44^\circ$ ✓

b)



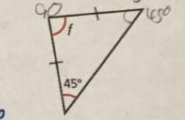
$c = 59^\circ$ $d = 59^\circ$ 62° ✓

c)



$e = 36$ ✓

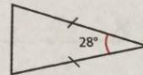
d)



$f = 90$ ✓

Talk about your reasons with a partner.

4 Dexter is working out the unknown angles in triangles.



I can't work out either of the missing angles because I don't have enough information.

Do you agree with Dexter? no ✓

Explain your answer.

you can add 28 to 180 so have 152 then it is together then split the angles in two. X



Mosses and liverworts

Mosses have no stem and no leaves, if you ever so moss it is usually in a group, most liverworts are about 4 inches high.

Ferns

Ferns are used for butterflies to lay their eggs like they do on nettles because other animals don't like them. A fern is a member of a group of vascular plants that reproduce via spores and have neither seeds or flowers. There are about 10,560 known species of fern.

Conifers

There are 629 living species of conifer, characterized by seed-bearing cones, conifers typically have narrow, needle-like leaves covered with a waxy cuticle and straight trunks with horizontal branches. Conifers have a life span that ranges from a few decades to more than 5,000 years.

Flowering plants

A tulip is a type of flowering plant, a gas plant or the bur I got Bush as it is sometimes called because its leathery green leaves, flowers and seed pods give off a strong lemon scented vapour.



Dinosaur extinction

In this text I have written about different ways dinosaurs went extinct, there are about 4 possibilities that people believe in.

Number one: changes in sea level, the water level moved onto land which caused dinos to have less land to live on.

Number two: vegetation, a lot of dinosaurs lived on plants and vegetation that grew on land and scientists believe that changes in this food was making the dinos die off.

Number three: volcano super eruptions, volcanic super eruptions in the area where India is now should have had a great impact on dinos by changing the climate and atmosphere

The last and final point: an asteroid hit the Earth, this asteroid came down from space at approximately 144,900 mph and killed all life on Earth.

Thank you for reading my Dinosaur extinction page. :)